

Cable transducer

Analog output

Measuring length absolute up to 4.7 m

GCA5 - analog



GCA5 analog

Technical data - electrical ratings

Voltage supply	8...30 VDC
Reverse polarity protection	Yes
Short-circuit proof	Yes
Consumption w/o load	≤35 mA (24 VDC)
Initializing time	≤500 ms after power on
Interface	Analog (0.5...4.5 V)
Function	Linear position feedback
Resolution	12 bit
Linearity	±1 % full scale output (f.s.o.)
Absolute accuracy	±1.8 % f.s.o. (+25 °C) ±2 % f.s.o. (-40...+85 °C)
Sensing method	Magnetic
Interference immunity	DIN EN 61000-6-2
Emitted interference	DIN EN 61000-6-4
Factory setting	Entire measuring range Min. output at 0 m Max. output at 4.7 m

Features

- Analog interface 0.5...4.5 V
- Measuring length 4.7 m
- Space saving design
- Designed for harsh environmental conditions
- Removable stickers for drainage

Technical data - mechanical design

Protection DIN EN 60529	IP 67 (housing, drainage holes closed), IP 54 (cable inlet)
Materials	Cable: Stainless steel cable sheathed with nylon Housing: plastic
Operating temperature	-40...+85 °C
Measuring length	4.7 m
Cable acceleration	≤50 m/s ²
Cable diameter	0.9 mm
Pull-in force	>1.5 N (pull-in force reduced at low temperatures)
Pull-out force	≤8 N
Relative humidity	95 % temporary condensing
Resistance	DIN EN 60068-2-6 Vibration 10 g, 10-2000 Hz DIN EN 60068-2-27 Shock 50 g, 11 ms
Weight approx.	900 g
Connection	Flange connector M12, 5-pin Cable 2 m
Instruction	Please consider the assembly instructions

Cable transducer

Analog output

Measuring length absolute up to 4.7 m

GCA5 - analog

Part number

GCA5-PM047.RA .V30.A

Connection

L Cable radial, 2 m

N Flange connector M12, 5-pin, radial, male contacts, ccw

Accessories

Mounting accessories

Z 119.065 Idler pulley for cable thickness 0.8...1 mm

Cable transducer

Analog output

Measuring length absolute up to 4.7 m

GCA5 - analog

Terminal significance

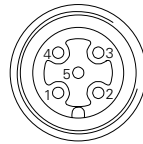
+Vs	Cable transducer supply voltage.
0 V	Cable transducer ground connection relating to +Vs.
Uout	Voltage output. Current output: max. 10 mA Load resistor: $\geq 1 \text{ k}\Omega$ between Uout / 0 V

Terminal assignment

Flange connector M12 and cable

Connector	Core colour	Assignment
Pin 1	blue	0 V
Pin 2	brown	+Vs
Pin 3	black	Uout
Pin 4	–	n.c.
Pin 5	–	n.c.

Cable data: 3 x 0.5 mm², 2 m



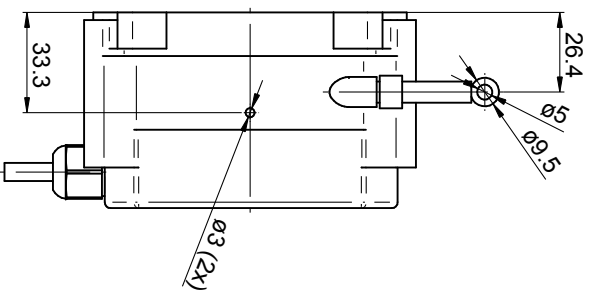
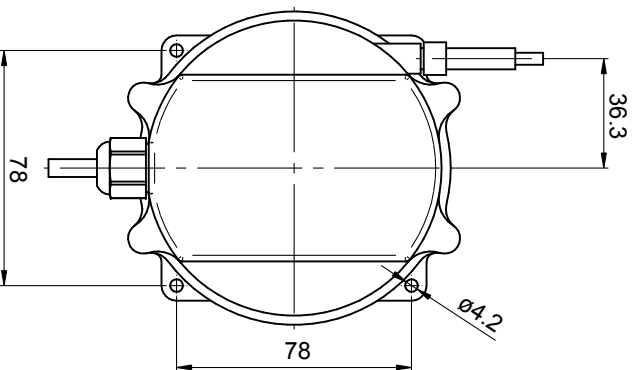
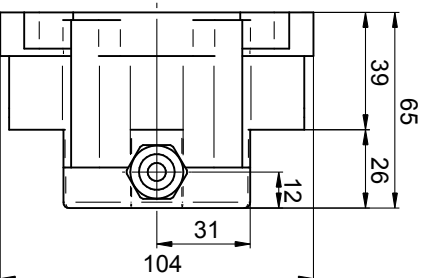
Cable transducer

Analogue output
Measuring length absolute up to 4.7 m

GCA5 - analog

Dimensions

GCA5 with cable



Cable transducer

Analog output

Measuring length absolute up to 4.7 m

GCA5 - analog

Dimensions

GCA5 with flange connector M12

